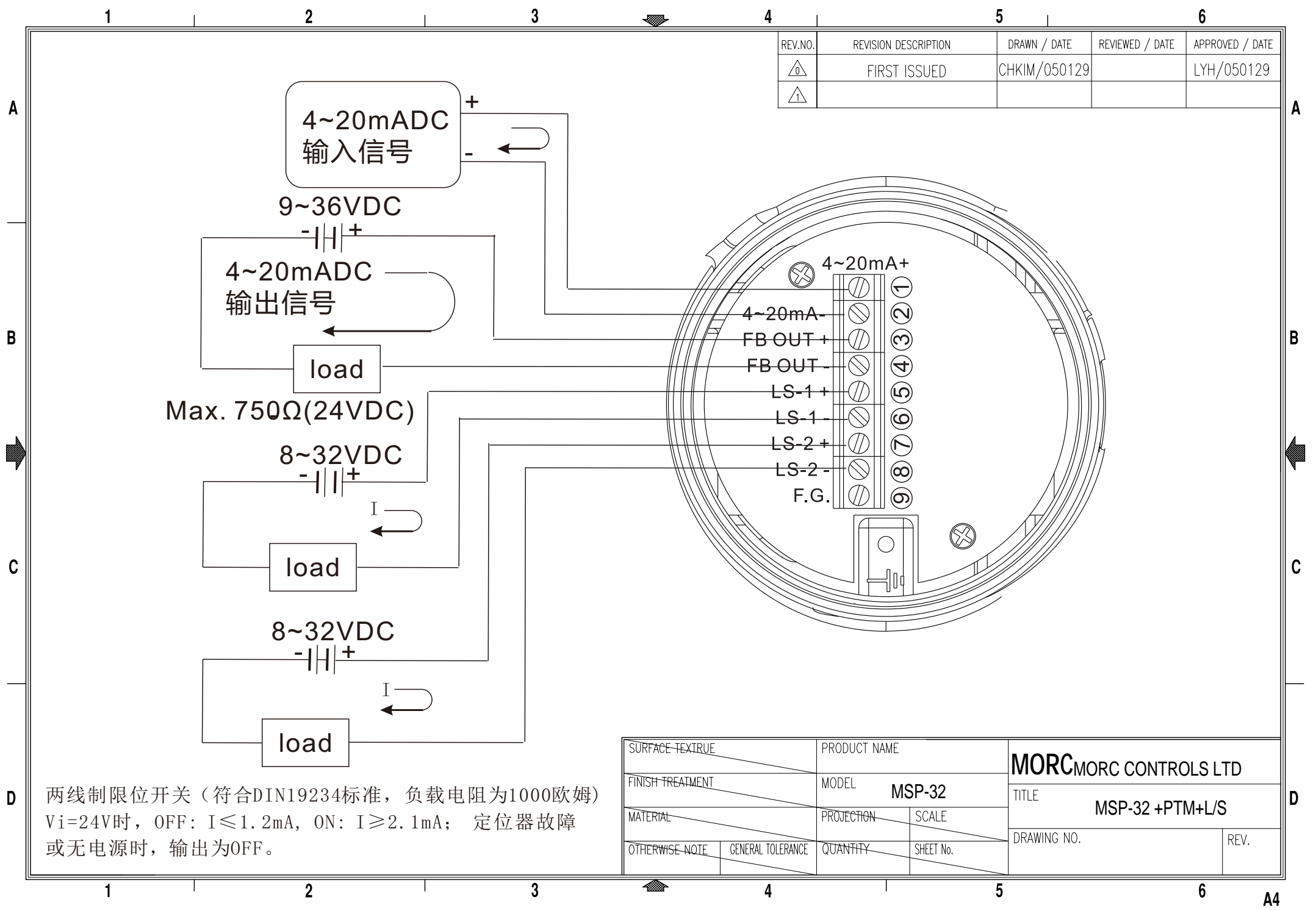


REV.NO.	REVISION DESCRIPTION	DRAWN / DATE	REVIEWED / DATE	APPROVED / DATE
△	FIRST ISSUED	CHKIM/050129		LYH/050129
△				



两线制限位开关（符合DIN19234标准，负载电阻为1000欧姆）  
 $V_i=24V$ 时，OFF:  $I \leq 1.2mA$ ，ON:  $I \geq 2.1mA$ ；定位器故障  
 或无电源时，输出为OFF。

SURFACE TEXTURE		PRODUCT NAME		<b>MORC</b> MORC CONTROLS LTD	
FINISH TREATMENT		MODEL <b>MSP-32</b>			
MATERIAL		PROJECTION	SCALE	DRAWING NO.	
OTHERWISE NOTE	GENERAL TOLERANCE	QUANTITY	SHEET No.	REV.	